

Transporter Assembly Instructions

Your Transporter Tricycle will arrive in **3** cartons – **tall skinny carton** – Front Section / **square squat carton** – Rear Section / **long rectangular heavy carton** - Battery



1. Front Section carton will include:

- Tricycle Front Section with motor.
- Remote and Ignition keys cable tied to headstem.
- Tricycle rear basket.
- Rear basket cover.
- Tricycle front basket.
- Owners Manual.
- Safety vest
- Lock
- Rear battery lock with keys
-

2. Rear Section carton will Include:

- Tricycle rear section
- Side mirrors
- Charger
- Seat
- Tricycle flag.
- 1 x Box containing Pedals, Basket Bolts, Gear Shifting Shaft, Front Basket Support Arm, Rear Indicators / Taillight, Cable Ties

3. Battery carton will include.....er.....um..... Battery!

Empty contents of ALL 3 cartons and check that ALL parts are accounted for.
Now you are ready to start assembly.



Remove all bubble wrap and any zip ties from both the front section and the rear section. Remove the battery from packaging and place on the charger before you start the Trike build. They should be fully charged by the time you need them.

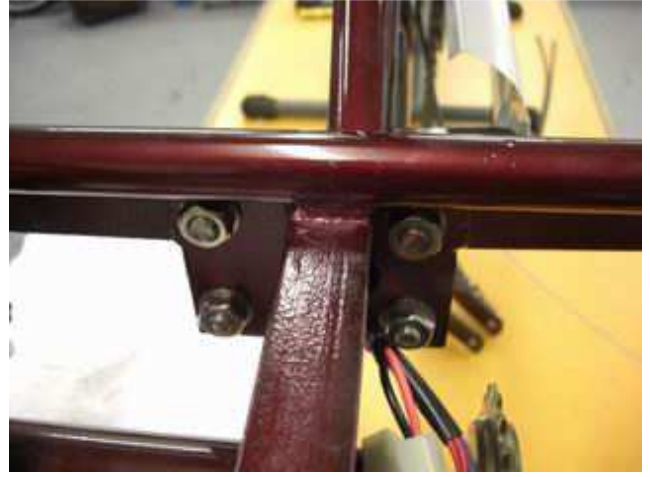


The first step is to attach the front section to the rear, this involves a few steps. The first step is to feed the Indicator and battery wires coming out of the frame in the front section through the corresponding hole in the rear section.



An easy way to stop the rear section from moving around while trying to do this is to sit the square block of foam that comes in the front section box under the transfer axle.

MOST IMPORTANT: When fitting 4 main frame bolts plus A-Frame bolts lubricate threads with “**Dry-Lube**” or grease



Now you can easily feed the wires through the rear section and use the 4 bolts provided to join the front section to the rear section.

Do not tighten these 4 main bolts at this time.
IMPORTANT NOTE: When fitting 4 main frame bolts and A-Frame bolts – heads to front of tricycle then flat washer – nut to rear of frame with spring washer



Now attach the A shaped Stabilizer arm, using 2 x 13mm Ring Spanner Tighten top bolt to seat tube as shown and 2 bolts attaching to rear section of frame. It's important to tighten the A-Frame before the 4 centre bolts as this ensures the front section and rear section line up perfectly.



Now you can use two open-end ring spanners to tighten the 4 centre bolts.



Once the two sections are securely joined, it's a good time to connect the Indicator and battery wires that we fed through the frame, connect the plugs and use zip ties to secure these plugs safely under the frame.



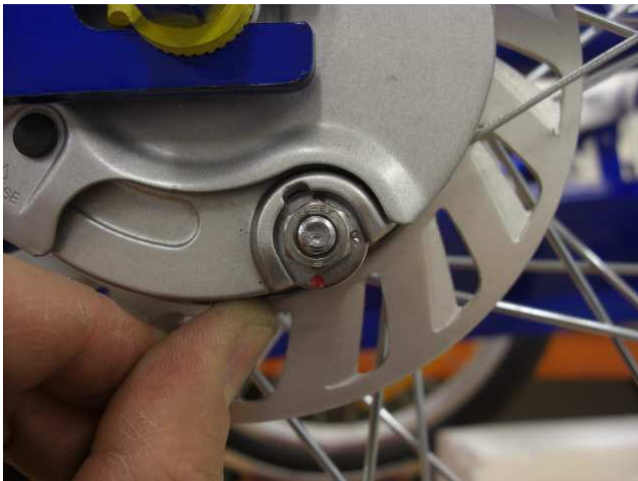
Fit the front section chain, and check the tension of both chains. You may need to adjust the transfer axle to achieve this.



You may also need to adjust the back left hand wheel accordingly to ensure both chains are equal tension.



Now is a good time to connect the cables for the rear brake. These are the new Shimano Roller Brake. The brake cable is already set to the correct length.



The brake anchorage bolt will slot in to the actuator.



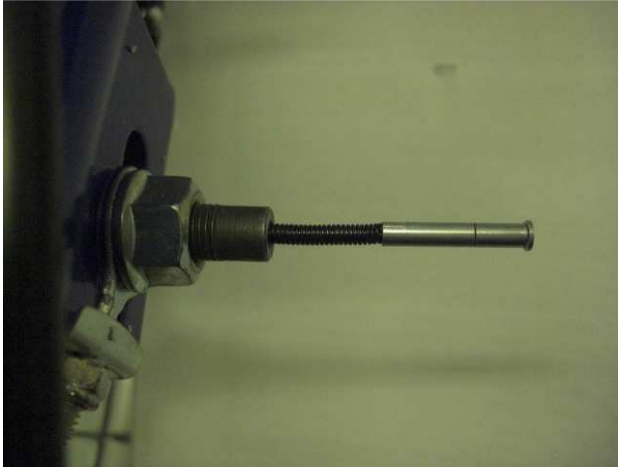
The adjuster anchorage point will fit in to the eyelet



This will then lock in to place. Use this adjuster to correctly tension the rear brake



The gears are next, This is the internal push rod. You will find it in the bag of cable ties.



The push rod fits in to the centre of the axle.



Confirm that the selector is locked in to 2nd gear.



The Thick yellow line must sit between the two thin white lines when in 2nd gear. This will correctly align the 3 gears.



Rotate handlebar to correct alignment position.



Use 13mm ring spanner to tighten head stem plunger bolt once handlebars are correctly aligned.



Fit supplied rubber plug to plunger bolt access hole to make appear *ultra pretty*.
NOTE: Do not lose or damage this plug – replacement cost from Graham is \$500 / from Tony is \$1,000



Now is a good time to fit the rear indicators and taillight. Attach using an 8mm ring-spanner. Blue wire indicates LEFT indicator / green wire indicates RIGHT indicators. Washers and nuts to secure located in additional small plastic bag



Once in place connect the plugs and secure excess wiring in a safe location under the frame using zip ties.



Check the tightness of the cranks with 8mm Hex key. Fit the Pedals.



Pay attention to the pedals. They are marked left and right (L R). Please note that the Left Hand Pedal has a Left Hand Thread (Counter-clockwise)



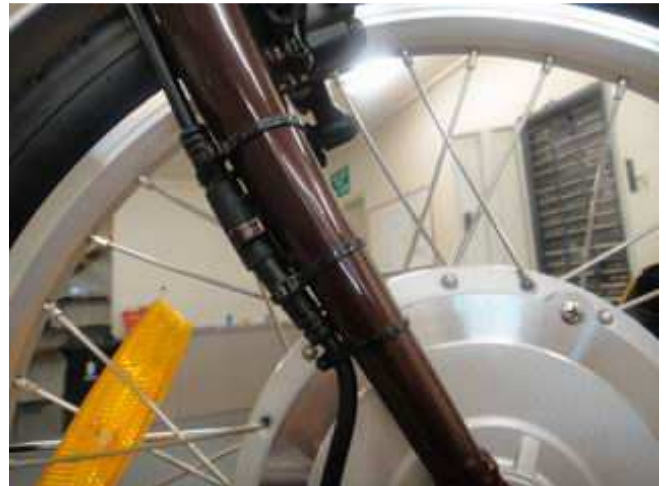
Transporter comes Original with 2 types of power activation:
 1. Twist Grip Accelerator Activation – Fully operable
 2. Pedal Activation – Disconnected – make sure PAS sensor is cable tied to main cable loom.



Should customer require Pedal Activation System to be operable – simple re-fit sensor to bracket mounted on bottom bracket axle – automatic activation will be effected when pedals rotated.
Note: If problems arise contact TEBCO.



Attach the rear battery lock



Make sure plug is fully inserted into socket before securing.
Secure the motor wire firmly alongside the right fork using zip ties.
Check ALL axle nuts – front and rear – are **TIGHT**.



Adjust the front brakes using a 5mm Alan Key.



Assemble the Rear Basket. You'll find it easier if you fit the basket cover to the basket before you fit the basket to the bike



Using the four 5mm bolts attach the rear baskets to the trike.



Attach the front basket



Finally fit the seat, the flag and the mirrors



Replace the battery and lock into position - plug battery power supply cable into rear of battery case and take for a **TEST RIDE**

A colour version of these Assembly Instructions can be downloaded from the TEBCO web site – here is the link:

<http://www.electricbicycle.com.au/assembly-instructions/Transporter-Assembly-Instructions.pdf>